

How to install the software and use the downloadable files for *Murach's C#*

To run the applications you've downloaded from the Murach web site, you need to have Visual Studio .NET or the Standard Edition of Visual C# .NET installed on your PC. In addition, if you want to access databases that are on your own PC rather than on a remote server, you need to install MSDE (Microsoft SQL Server Desktop Engine). This document describes how to install these products. It also describes the files that you downloaded and tells you how you can use them.

How to use the downloadable files	2
How to install the .NET Framework and Visual Studio .NET	4
How to install MSDE and use it with the downloaded database	6



Mike Murach & Associates

(559) 440-9071 • (800) 221-5528

murachbooks@murach.com • www.murach.com

How to use the downloadable files

Figure 1 summarizes the files that are part of the “All book files 2003” file that you’ve downloaded from the Murach web site (it’s named `csbp_allfiles2003.exe` unless you renamed it during the download.) When you execute this file, it installs all of the files it contains in the `Murach\C#.NET` directory on your C drive. Within this directory, you’ll find a directory named `Book applications` that contains the source code for some of the applications in the book. The source code is organized in directories by applications within chapters. For example, the source files for the Invoice Total application in chapter 5 are stored in `C:\Murach\C#.NET\Book applications\Chapter 05\InvoiceTotal`. You can use Visual Studio to open and run these applications.

The download also includes starting source code for any exercises in the book that require it, and it includes the data files used by the exercises and the book applications. When you execute the `csbp_allfiles2003.exe` file, these files are installed in the `Murach\C#.NET\Exercise starts\C#.NET` directory. Then, a batch file is executed that copies the `C#.NET` subdirectory to your C drive. That way, it will be easy to locate the files and directories you need as you’re working on the exercises. In addition, if you make a mistake and want to restore a file to its original state, you can do that by copying it from the directory where it was originally installed.

You may also need to prepare your system for using the database that’s included in the download. That’s the case if you want to use this database on your own PC rather than using a database that has been installed on a remote server. Then, you’ll need to install MSDE on your system, and you’ll need to attach the database for the book to MSDE. You can learn how to do that in figure 3.

What the downloaded file contains

- The source code for selected applications presented in the book in 2003 format
- The starting source code for all of the exercises included in the book in 2003 format
- The data files used in these applications
- The MMABooks database used in these applications
- A batch file that creates a copy of some of the files so you can restore them if necessary
- Batch files that use SQL scripts to install and restore the MMABooks database as required
- This Readme file

How to use the source code for the applications presented in this book

- The source code for some of the applications presented in this book can be found in chapter directories in the C:\Murach\C#.NET\Book applications directory. You can view this source code by opening the project or solution in the appropriate directory.

How to use the source code for the exercise starts

- Some of the exercises have you start from existing projects. You'll find the source code for these projects in the C:\C#.NET directory. Within this directory, you'll find a subdirectory for each chapter that has exercise starts. Then, within that directory, you'll find a subdirectory for each exercise start. For example, you'll find the exercise start for exercise 1-1 in the C:\C#.NET\Chapter 01\FinancialCalculations directory.

How to prepare your system for using the database

- If you're going to use the database that comes with this book on your own PC, you'll need to install MSDE and then attach the database to MSDE as described in figure 3.

Installation note

- When you run the downloaded file, the exercise starts and the data files are installed twice, in two separate directories: C:\Murach\C#.NET\Exercise starts\C#.NET and C:\C#.NET. As you do the exercises, you'll use the source files in the C:\C#.NET directory as described above. Similarly, as you run the applications and the exercises, you'll use the data files in the C:\C#.NET directory. If you ever need to restore a file, however, you can copy it from the C:\Murach\C#.NET\Exercise starts\C#.NET directory.

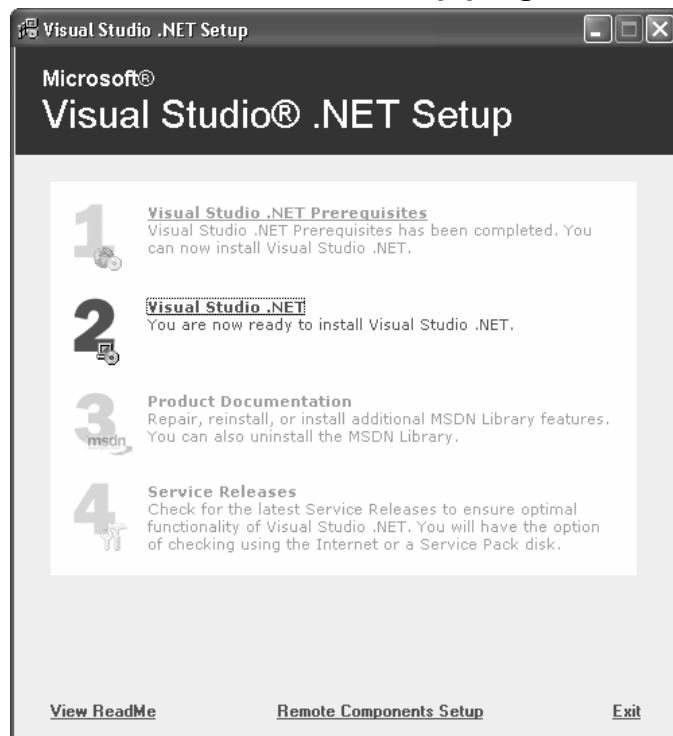
Figure 1 How to use the downloadable files for *Murach's C#*

How to install the .NET Framework and Visual Studio .NET

If you've installed Windows applications before, you shouldn't have any trouble installing Visual Studio .NET. You simply insert the first Visual Studio CD, and the setup program starts automatically. This setup program will lead you through the steps for installing Visual Studio as summarized in figure 2.

The first step of the installation procedure for Visual Studio .NET (or the Standard Edition of Visual C# .NET) is to install the .NET Framework and other prerequisites for Visual Studio. The second step is to install Visual Studio itself. Although you will have a variety of options for what's actually installed, it's safest to just accept the defaults unless you're familiar with the various components and know exactly what you need. The final step is to apply any updates that have become available since the product was released. Note that you can also check for updates after you exit from the setup program by using the Help→Check for Updates command in the Visual Studio menu.

The Visual Studio .NET setup program



How to install Visual Studio .NET

- Insert Disc 1 of the Visual Studio .NET CDs, and the setup program will start automatically.
- If the .NET Framework has not been installed on your system, you will need to install it before installing Visual Studio .NET. To do that, click the Visual Studio .NET Prerequisites link in the Setup dialog box.
- After the .NET Framework is installed, click the Visual Studio .NET link and follow the instructions to install Visual Studio .NET. When the Options page is displayed, you can usually just accept the default options unless you have special requirements.
- After you install Visual Studio .NET, click the Service Releases link to check for and install any updates that are available.

What if you're using the Standard Edition of Visual C# .NET?

- The setup program for the Standard Edition of Visual C# .NET is similar to the setup program for Visual Studio .NET, but fewer options are available on the Options page.

Figure 2 How to install the .NET Framework and Visual Studio .NET

How to install MSDE and use it with the downloaded database

MSDE is a desktop version of Microsoft SQL Server that can be used to test database applications. MSDE came with Visual Studio .NET 2002 (and Visual C# .NET 2002), but it doesn't come with the 2003 versions of Visual Studio .NET and Visual C# .NET. Instead, you have to download and install MSDE from Microsoft's web site. Figure 3 describes the procedure for installing MSDE for the 2003 version of Visual Studio .NET and Visual C# .NET.

After you install MSDE, you'll notice a server icon near the right side of the Windows taskbar. If you double-click this icon, the SQL Server Service Manager dialog box shown at the top of this figure is displayed. You can use this dialog box to start, continue, pause, or stop the SQL Server engine. By default, SQL Server is started each time you start your PC. If that's not what you want, you can remove the check mark from the Auto-start option in this dialog box. Then, you can start SQL Server whenever you need it using this dialog box.

Although you don't need to know much about how MSDE works to use it, you should know that when you run the setup program, it creates a copy of SQL Server with the same name as your computer appended with VSdotNET. For example, the copy of SQL Server on my system is named DOUG\VSdotNET as you can see in the SQL Server Service Manager dialog box in this figure. After this server is installed and started, you can add databases to it. Then, you can create connections to those databases that you can use in your C# programs.

If you want to use the database that comes with this download, you can do that without much trouble. Once you've installed the downloaded file, you can run the batch file named DB_Attach.bat in the C:\Murach\C#.NET\Database directory. This batch file runs a SQL Server script named DB_Attach.sql that attaches the database to the copy of SQL Server running on your computer.

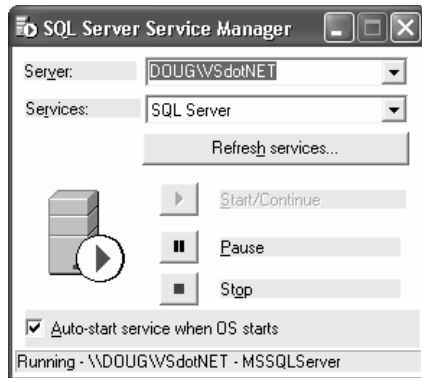
Note, however, that if the copy of SQL Server on your system has a name other than the computer name appended with VSdotNET, the batch file we provide won't work. But you can easily change it so it will work. To do that, just open the file in a text editor, such as NotePad. When you do, you'll see a single command with this server specification:

```
%COMPUTERNAME%\VSdotNET
```

Then, you can just change this specification to the name of your server.

We've also included a batch file you can use to restore the downloaded database to its original state. To do that, just run the batch file named DB_Restore.bat in the C:\Murach\C#.NET\Database directory. This batch file starts by running a script that detaches the database. Then, it copies the original database files, which are stored in the C:\Murach\C#.NET\Original database directory, over the current database files. Finally, it runs a script that reattaches the database.

The SQL Server Service Manager



How to install and use MSDE

- Use Windows Explorer to navigate to this folder: C:\Program Files\Microsoft Visual Studio .NET 2003\Setup\MSDE. Then, double-click the msde_readme.htm document to display it in your browser. Click the link in that document to go to the Microsoft web site, and follow the directions on the page that's displayed to download and install MSDE. When you're done, restart your PC.
- After you install MSDE, SQL Server will start automatically each time you start your PC. An icon will appear near the right side of the Windows taskbar to indicate that this service is running. To manage this service, double-click the icon or select the Start → Programs → MSDE → Service Manager command to display the dialog box shown above.
- The setup program creates a copy of SQL Server with a name that consists of your computer name followed by \VSdotNET. You can use this name to define connections to the databases that you use with this server.

How to attach the downloaded database to MSDE

- If you're going to use the MMABooks database on your own PC, you need to attach it to MSDE. To do that, you can use one of the batch files and SQL scripts that are downloaded and installed along with the other files for the book.
- To attach the database to MSDE, use the Windows Explorer to navigate to the C:\Murach\C#.NET\Database folder and double-click the DB_Attach.bat file. That will run the batch file and attach the database.

How to restore the downloaded database to its original state

- You can use the other batch file in the C:\Murach\C#.NET\Database folder, DB_Restore.bat, to restore the MMABooks database to its original state. To do that, navigate to the C:\Murach\C#.NET\Database folder and double-click the DB_Restore.bat file. That will run the batch file and restore the original database.

Figure 3 How to install MSDE and use it with the downloaded database